



WARNING:

Your paintball regulator is not a toy. High pressure Air/ Nitrogen can be dangerous. Proper safety precautions and handling procedures should be followed at all times. Misuse, abuse and improper handling can result in serious injury or death. Only qualified individuals trained in the proper fill procedures should fill your system.

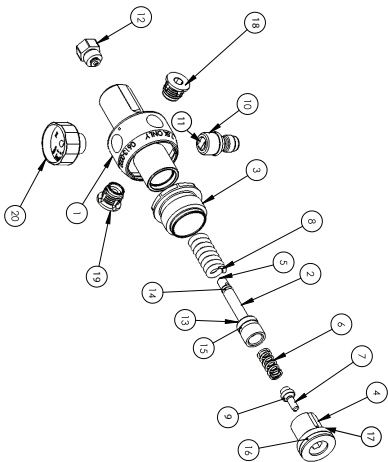
The installation of your First Strike® regulator should be done only by a qualified individual trained in the repair and maintenance of air systems and their components. At no time should you attempt to service, install or remove the regulator yourself.

NOTICE: First Strike® assumes no liability for any product or subsequent damage or injury in the event any revisions, dismantling or experimentation is done, or the product is used for any other purpose for which it is intended.

WARRANTY INFORMATION: First Strike® warrants against defects in manufacturing and workmanship for a period of one (1) year from the date of purchase. Please see our web site to register your system for warranty coverage. **Only registered systems are available for warranty coverage.**

FIRST-STRIKE.COM

ITEM NO.	DESCRIPTION	QTY.
1	Body	1
2	Piston	1
3	Threaded Collar	1
4	Flange	1
5	Ball	1
6	Poppet Spring	1
7	Poppet	1
8	Piston Spring	1
9	O-ring	1
10	Front Nipple	1
11	Pro Fill Nipple Stud	1
12	Seat Seal	1
13	Piston Shim	1
14	O-ring	2
15	O-ring	1
16	O-ring	1
17	Burnt 700dur	1
20	Burnt Disc	1
21	Burnt Disc	1
22	5000psi gauge	1



FIRST STRIKE®

P 260.478.2500
2717 Ferguson Rd.
Fort Wayne, IN 46809



FIRST STRIKE®

FS 4.5K – Regulator

Item No: 2451



8 49176 02451 5

Made in USA

©2016 First Strike®
All rights reserved.

P-9776



4.5K

ADJUSTABLE POSITION
4500 PSI AIR TANK REGULATOR

FS-4.5K

4500 PSI AIR TANK REGULATOR

INTRODUCTION

Congratulations on your purchase of this regulator by First Strike®. You have just made the best possible choice in primary air system regulation. The regulator offers innovative technology that provides peak performance in the smallest, lightest, most efficient regulator available.

Caution: As with any high pressure air system, the potential for danger is present. Read the entire owners manual and familiarize yourself with the regulator and safety precautions prior to using your regulator.

Warning: Always remove all the air from the system (bottle) prior to attempting any repairs. Failure to do so can cause damage or death.

FS-4.5K REGULATOR UNIQUE DESIGN FEATURES:

- **Patent Pending Pro-Series Safety Assembly** - The only safety with a safety. Exclusive flush burst disc design that reduces the traditional burst disc profile with added positive directional vent discharging technology that allows venting prior to coming loose from the regulator.
- **Tri-Safe Technology** - External High Side, External Low Side, and the unique Internal Low Side safety bleed that allows venting of pressure from behind the gauge.
- **Removable Poppet Retainment Flange** - Vents all residual pressure trapped in the "low pressure" side of the prior to disengagement.

- **Adjustable Position of Gauge and Fill Nipple** - Insert 3/16 allen key into top flange to loosen and rotate brass threaded collar to desired position.

INSTALLATION

Only install your regulator into an appropriate tank. The pressure rating of both the regulator and the cylinder must be the same. The 3000 PSI regulator can only be installed on a 3000 PSI rated bottle. The 4500 PSI regulator can only be installed on a 4500 PSI bottle. The FS-4.5K regulator is marked as such next to the fill nipple. Always follow the guidelines for cylinder use set forth by the DOT, TC, or PI depending on where you reside.

The installation of your regulator should only be performed by a qualified air smith experienced in the use of high pressure air systems and the safety precautions associated with them.

1. Carefully thread the regulator into the tank in a clockwise rotation making sure that the o-ring is properly seated in the cylinder gland until "hand tight". Take care to notice any resistance during installation. If installer is met with any resistance STOP the install IMMEDIATELY. Remove regulator and inspect the regulator threads and tank threads for foreign material or damage. If damage is evident, repair or replace the damaged unit.
2. Once the regulator is "hand tight", using the appropriate tools, torque the regulator into the tank to 25-35 ft. lbs. to snug the regulator into its final position. DO NOT exceed 40 ft. lbs., damage to the regulator will result if excessive force is used. ASTM specification F2653-07 states that the regulator should have a minimum break away torque of 18 ft. lbs.

MAINTENANCE

Your First Strike® regulator should provide you with a lifetime of enjoyment and reliable service. Any mechanical device requires a small amount of routine maintenance to prevent failure and to keep the unit running at peak performance. Your First Strike® regulator is designed with the minimum amount of maintenance required. Prior to installing your regulator onto your marker or in your ASA for the first time, we suggest you lubricate the regulator threads and o-ring located at the top of the regulator. Depending on the conditions in which you play,

it may be necessary to periodically clean and lubricate your regulator. Periodic cleaning is important, since it will remove any dirt or debris. The accumulation of dirt and debris can cause damage to your regulator and possibly your marker. First Strike® recommends the use of GUERRILLA LUBE or equivalent lightweight synthetic lubricant.

WARNING

NEVER use a petroleum based lubricant with your regulator/air system. Any lubricants used on your regulator should be compatible with the anodized finish and with polyurethane o-rings.

DO NOT use any caustic agents to clean any portion of the regulator. Severe damage can occur from the introduction of such agents. Warm soapy water is the only cleaning solutions First Strike® suggests.

Installing the incorrect regulator on the incorrect bottle may lead to injury or death.

NEVER inject oil into the regulator or allow oil to enter the bottle. Oil will ignite which may lead to injury or death

PRECAUTIONS

Never use your system if there is a leak of any kind. Take your regulator to a certified repair technician immediately for inspection and service. Failure to do so can result in serious damage to the regulator or bodily injury.

Never use your regulator if the gauge face is cracked, if the regulator does not read correctly, or if the body of the gauge is deformed in any way.

Only use First Strike® replacement safety assemblies in the event of a failure. Proper safety installation procedures should be followed in order to ensure the effectiveness of the safety device.

Never substitute fill nipple assemblies. The fill nipple installed on your system is designed to work in conjunction with the port parameters designed into the system. Substitution may result in damage to your system and potential hazard.

WARRANTY

Your First Strike® product is warranted against defects in manufacturing and workmanship for a period of one year from the date of purchase. Your product must be registered before the warranty can be applied. In order to properly register your product, please go to our web site at first-strike.com and click on the registration section. Follow the directions to complete your warranty registration. Once you complete the registration process your product will be covered. All repairs are done at the First Strike® facilities. Round trip shipping is the responsibility of the consumer. See our web site for additional details.

DETAILS

For additional details such as available parts kits and nomenclature, please refer to our website **FIRST-STRIKE.COM**

OUTPUT PRESSURE

The output pressure of the regulator can be adjusted with the use of shims. Your regulator comes packaged with three different sized shims that, when installed, will allow you to increase the output pressure of your regulator. The amount of increase in pressure will depend on the size the size and combination of shims used. Please reference the chart below for shim/output combinations.

Starting output approximately 800psi

Black = .005 inches +20psi
Silver = .010 inches + 40psi
Gold = .015 inches + 60psi

WARNING: Do not install more than .050 inches of shims in the regulator. Installing more than the maximum thickness of shims will void your warranty and could cause irreparable damage to equipment. If you are not capable of working on your regulator, please take it to a qualified air smith for service.